

# Deeper Understanding of **Life**

TE  GEN 透景

Stock Code: 300642 SZ



# Contents

## Part 1: Understanding

---

- Mission & Vision
- Values

## Part 2: History & Culture

---

- History & Culture
- Partners
- During the Pandemic
- Collaborations

## Part 3: Product

---

- Molecular Diagnostics
- Multiplexed Bead Flow Fluorescence
- Biochemistry
- Chemilluminescence

## Part 4: Growth

---

- YOY Growth
- Growth by Segments
- Growth Distributions



Part 1:

# Understanding

TELLGEN INFO DECK

03



Mission

**Deeper** Understanding of Life

Vision

Become The **Leader** of Innovative Technologies  
And In Vitro Diagnostic Field

Value

Focusing On The **Needs And Demands** of Doctors, Patients, And  
Institutions. Trust The Power of **Innovation And Devotion**





## Dr. Jian'er Yao

FOUNDER & CEO  
CHAIRMAN OF THE BOARD

Philanthropist  
Scientist  
Entrepreneur  
Activist  
Investor

Jian'er Yao



Part 2:

# History & Culture



History & Culture

# Creating an Impact

**Impact 1** .....

Tellgen Corporation was established in 2003 at the Medicine Valley in Shanghai, also known as the Silicon Valley of China, which is the first to develop reagents on flow fluorescence platform.

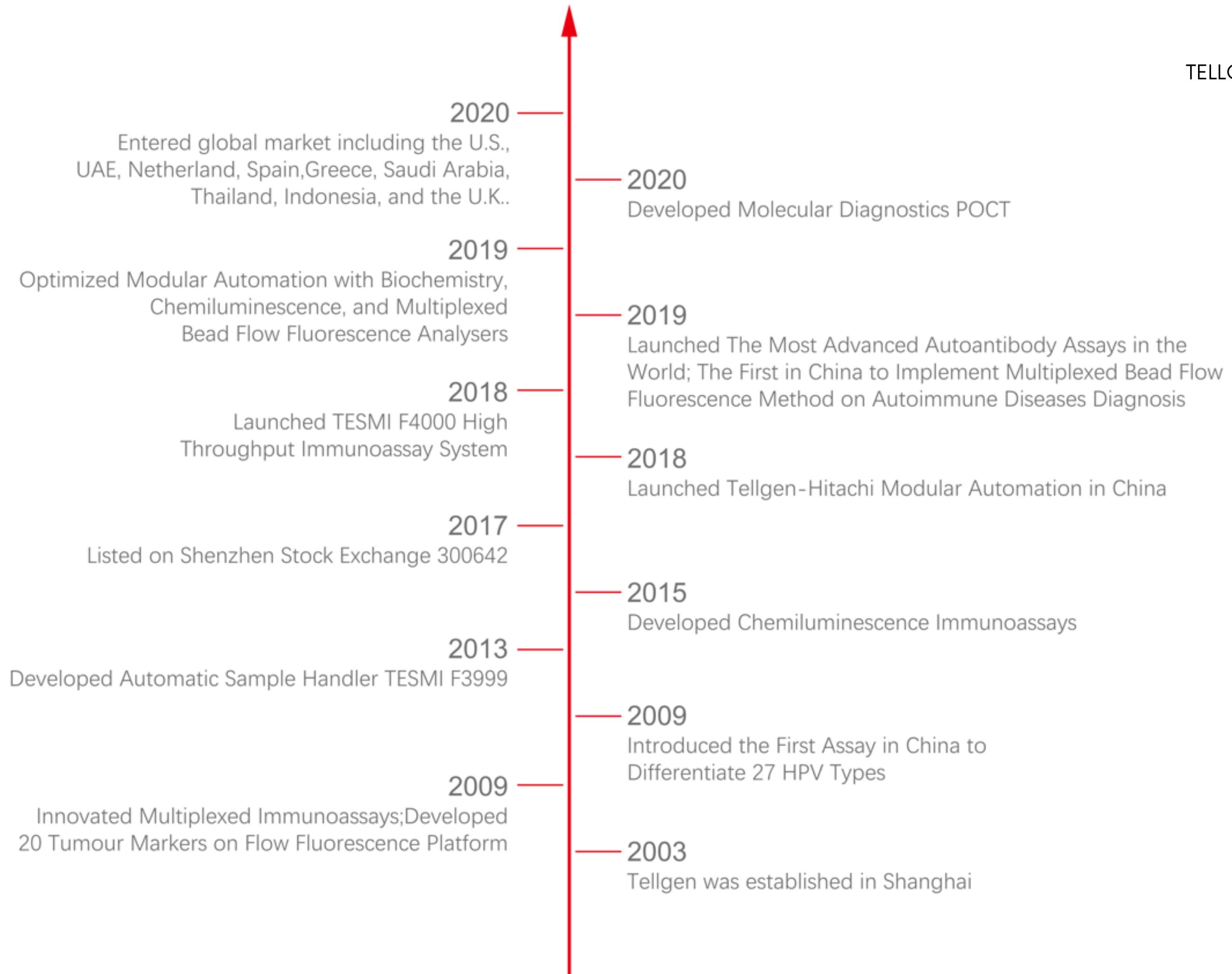
**Impact 2** .....

Tellgen has launched the IVDs include Tumor Marker, HPV, ToRCH, Y Chromosome microdeletions test, and TESMI system; over 200 products are NMPA/SFDA certified; 34 products are CE certified.

**Impact 3** .....

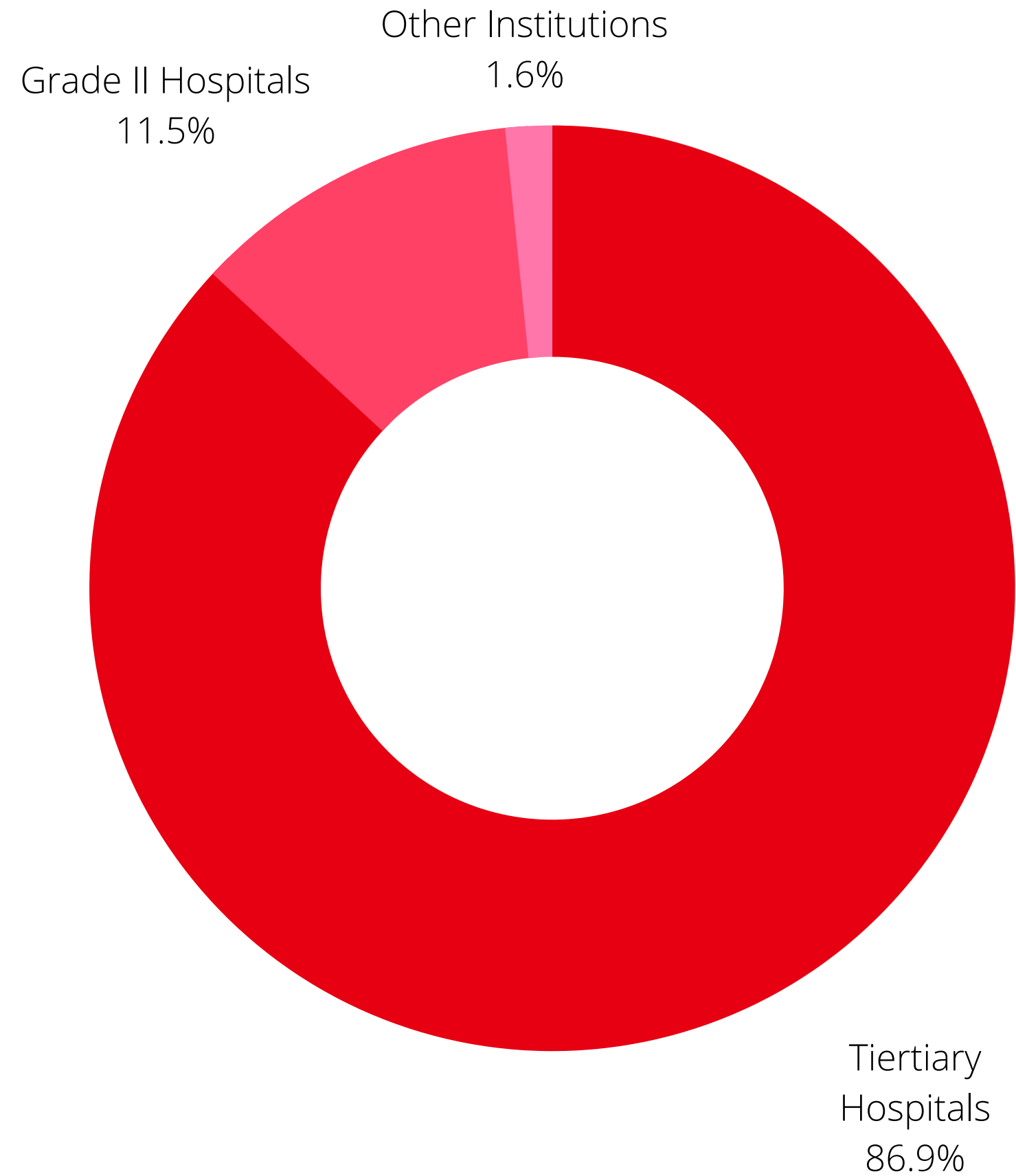
Went public in 2017 in Shenzhen and has grown to 1000 employees. Patented multiple products like ColonS9 and LungMe using DNA methylation technology that changed the game of tumor detection.







# The Partners of Tellgen Corporation





# We Are Together

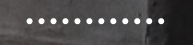
Supporting the high-risk regions in the country during the pandemic.





# Collaborations with **Universities**

Collaborate with multiple universities and colleges in mainland China and established Tellgen Scholarships to help talented students pursuing their academic goals in a better world.





Part 3:

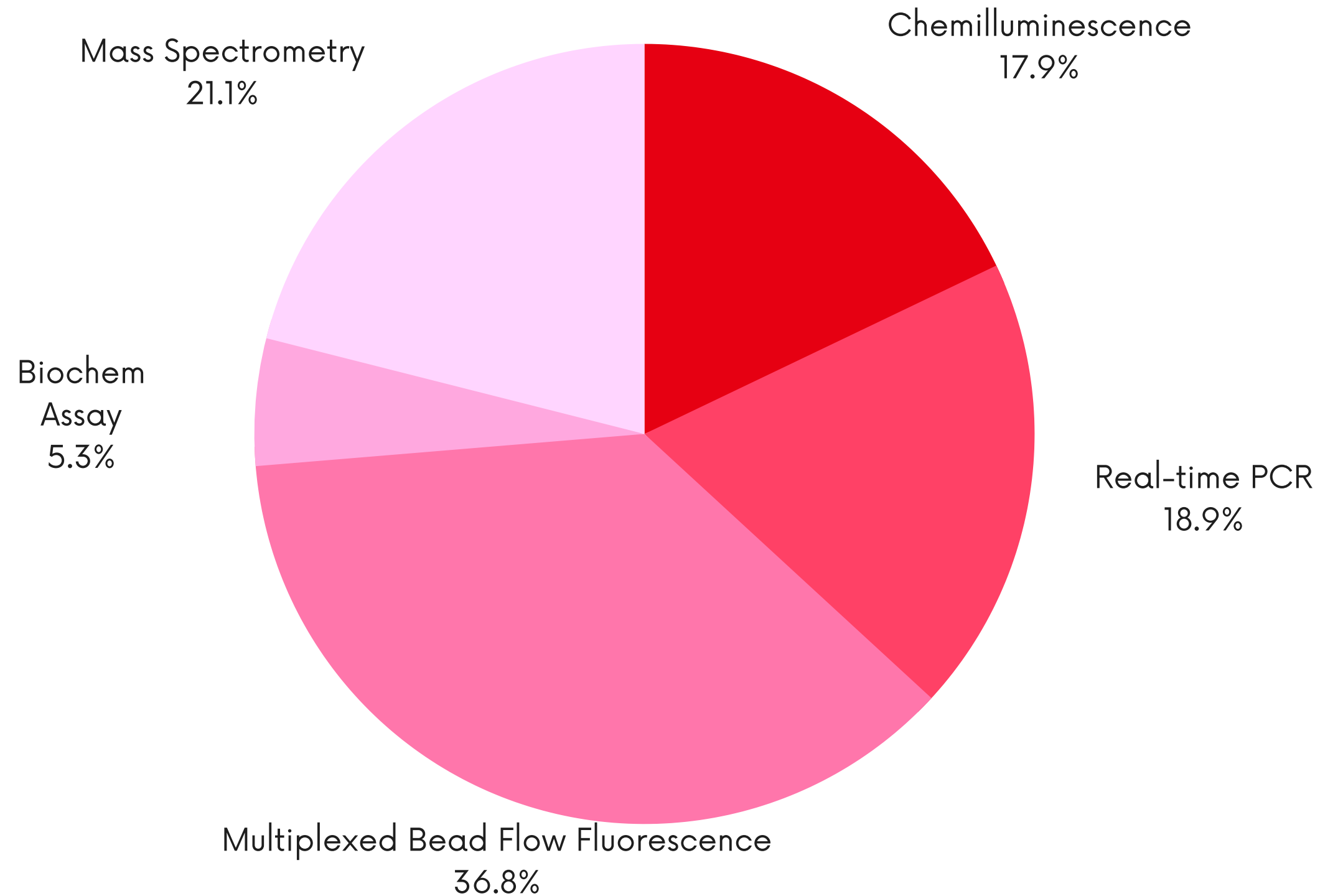
# Products

TELLGEN INFO DECK

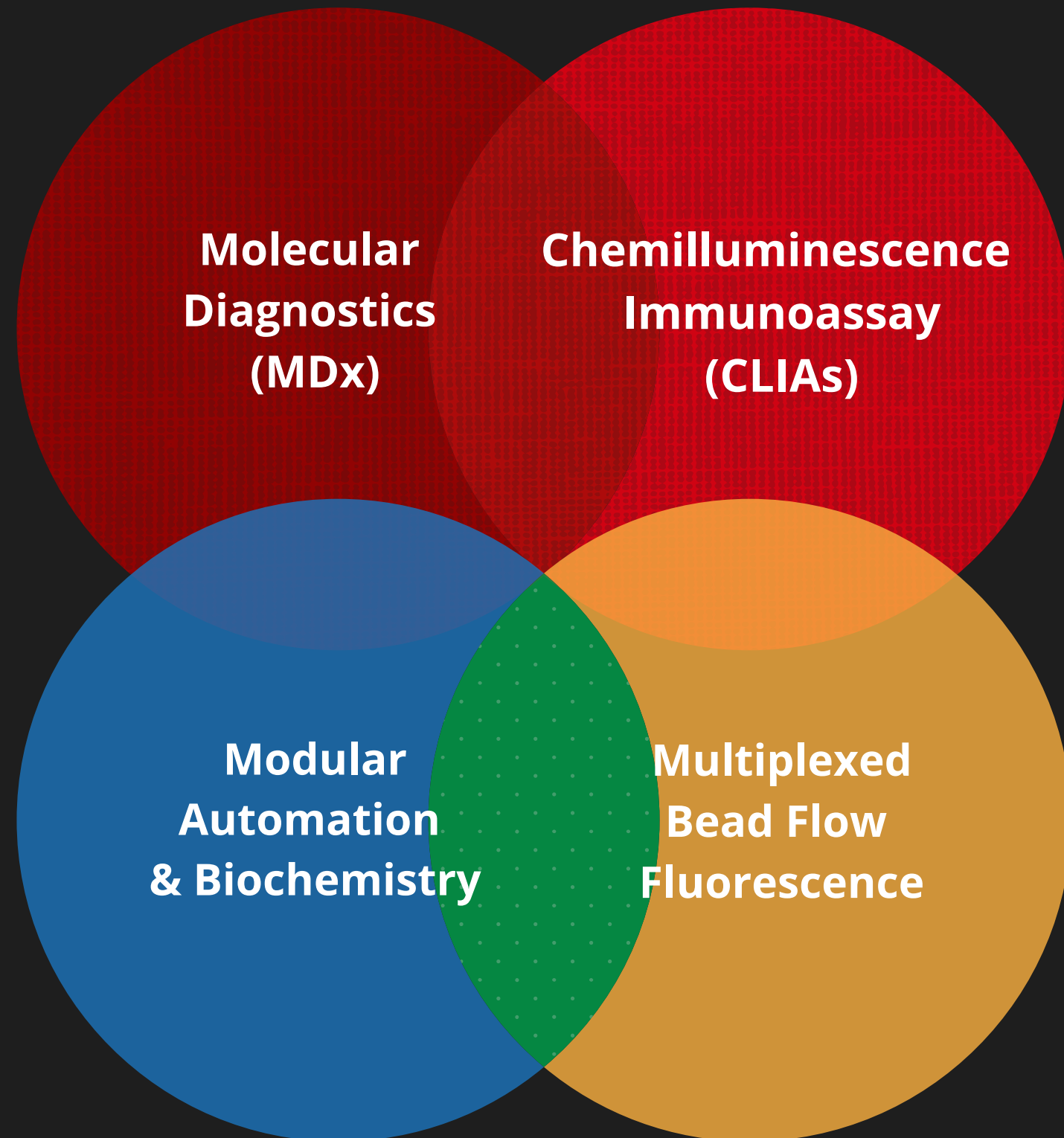
12

# Research Spending on Technology Segments

Tellgen has five main fields of research and development.





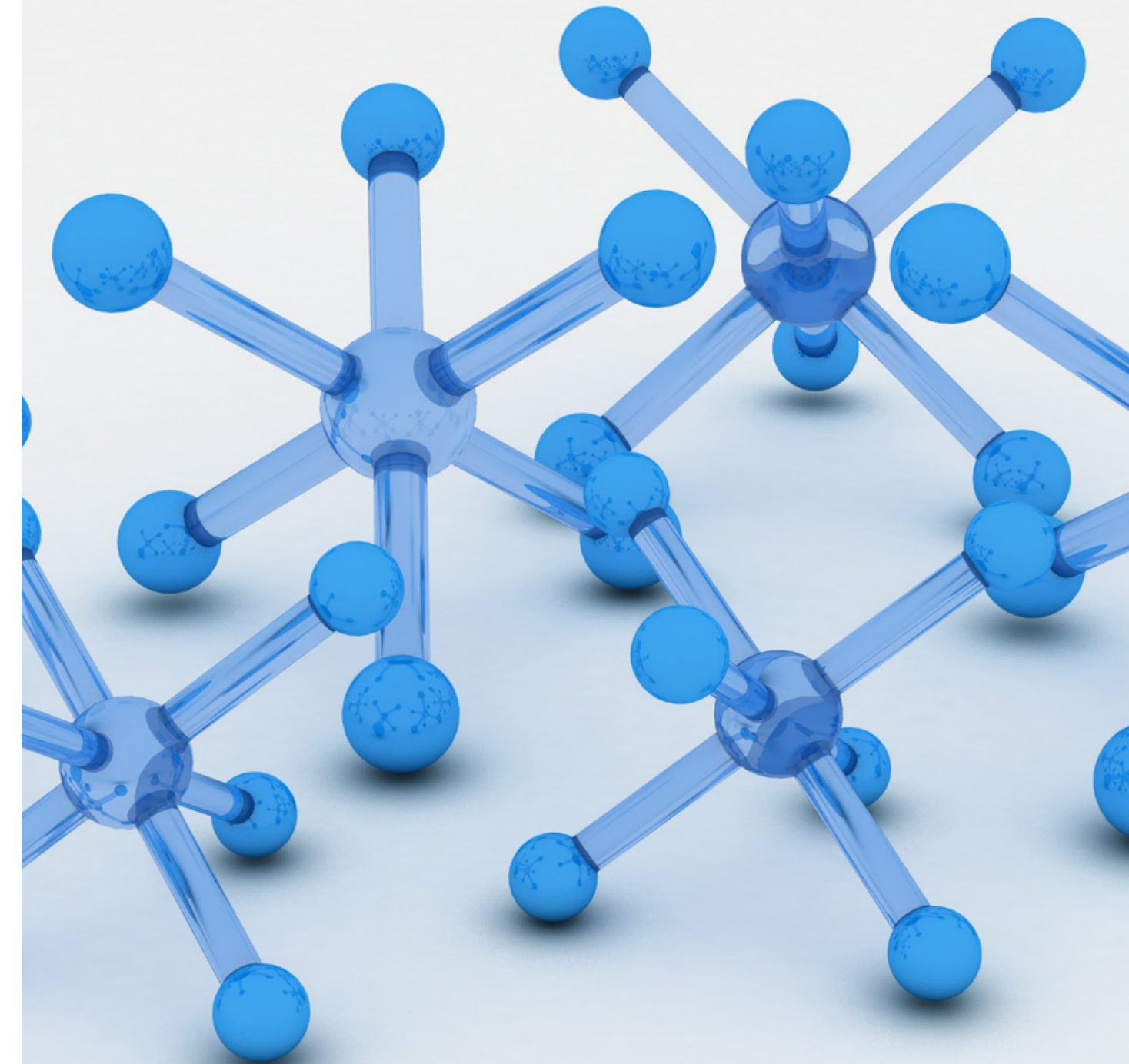


# Products: Four Segments

- Molecular Diagnostics
- Chemilluminescence
- Multiplexed Bead Flow Fluorescence
- Modular Automation & Biochemistry

# Molecular Diagnostics

- SARS-CoV-2 Real-time PCR Kit
- SARS-CoV-2 Cartridge PCR Kit
- HPV 2+12
- HPV 5+9
- Y6
- EGFR/KRAS/BRAF Mutation PCR Kit
- ColonS9® - Septin9
- LungMe® - SHOX2 & RASSF1A DNA Methylation PCR Kit
- Nucleic Acid Extraction Kit
- Cell Preservation Solution





Product	RNA Extraction	Gene Detected
Fast one-step SARS-CoV-2 RT PCR Kit	No	N gene + ORF1ab gene
Fast one-step SARS-CoV-2 RT PCR Kit	No	N gene + S gene
SARS-CoV-2 Nucleic Acid Detection Kit based on Real-Time PCR Platform	No	N gene + ORF1ab gene
SARS-CoV-2 Nucleic Acid Detection Kit based on Real-Time PCR Platform	No	N gene + S gene
SARS-CoV-2 Nucleic Acid Detection Kit based on Real-Time PCR Platform	Yes	N gene + S gene

Liquid or lyophilized products  
Conventional PCR or Rapid PCR  
Extraction or no extraction methods

# Real-time PCR

## SARS-CoV-2

- SARS-CoV-2 RT PCR Kit
- Transport Medium - Modified Lysis Buffer
- Transport Medium - Modified Hank's Buffer



Hank's Buffer

Lysis Buffer

RT PCR Kit



TE GEN



Overall Solution For SARS-CoV-2



RT-LAMP

NuaBox™

### Parameter

Swab preservation solution:

Sample treatment:

Detection time:

Reagent form:

### Highlight

Exclusive swab preservation solution

Mix thoroughly and run sample on device

Strong positives in **10mins**, all results in **30mins**

Lyophilized, store and transport at room temperature



# Automated Integrated Gene Detection System (AIGS)

POCT: Sample In, Result Out

- SARS N1 Gene + N2 Gene Detection
- SARS N Gene + ORF1ab Gene Detection
- Others: Respiratory Diseases; Sexual Health, etc.
- **Fast** - Results in ~ 1.5 hours
- **Safe** - Zero contamination
- **Easy** - Manual operation in under 2 minutes
- **Flexible** - 4 individual testing channels
- **Diverse** - 5 fluorescence to choose from





# Chemiluminescence

- SARS-CoV-2 Antigen CLIA
- SARS-CoV-2 IgG Antibody CLIA
- SARS-CoV-2 IgM Antibody CLIA
- SARS-CoV-2 Neutralizing Antibody CLIA



Collect Samples



Centrifuge Samples  
\*Depends on the assay



Run Samples  
on **TESMI i100**



# Chemilluminescence

**ASSAY FOR  
TUMOR MARKER  
CARDIOVASCULAR AND  
INFLAMMATORY MARKERS  
THYROID FUNCTION AND HORMONE  
INFECTIOUS DISEASES  
BONE METABOLISM  
DIABETICS AND ANEMIA**





# Chemilluminescence

- Choose from 71 assays in 8 different disease aspects
- Combine different assays for improved accuracy and reliability of results
- Multiple screening platforms
- Acridinium ester luminescence method for improved stability and accuracy



<b>Tumor Marker: 23 assays</b>	β2-MG	MYO	HBcAb
AFP	G-17	hFABP	HBsAg
CEA	PIVKAlI	IL-6	HBsAb
NSE	HER2	PCT	HIV Ag/Ab
proGRP	<b>Thyroid Hormone: 10 assays</b>	D-Dimer	<b>Bone Metabolism: 6 assays</b>
SCCA	TSH	sST2	25-OH VD
CYFRA21-1	TT3	<b>Hormones: 8 assays</b>	PTH
HE4	Free-T3	AMH	Osteocalcin
PGI	TT4	FSH	Calcitonin
PGII	Free-T4	LH	P1NP
CA24-2	TG	PRL	β-CTX
CA50	TgAb	β-hCG	<b>Diabetes: 2 assays</b>
CA72-4	TPO Ab	P	Insulin
CA125	TSHR Ab	T	C-Peptide
CA19-9	T-Uptake	E2	<b>Anemia: 2 assays</b>
CA15-3	<b>Cardiovascular and inflammation: 10 assays</b>	<b>Infectious diseases: 8 assays</b>	Folate
tPSA	NT-ProBNP	TP Ab	Vitamin B12
fPSA	BNP	HCV Ab	<b>SARS-CoV-2: 4 assays</b>
free-β-hCG	hs-cTnl	HBeAg	Antigen/Neutralizing Antibody
Ferritin	CK-MB	HBeAb	IgG/IgM



For Labs and Hospitals



For Large-Scale Screening



# Chemiluminescence Autoanalyzer

## TESMI i100 Features:

- For labs of **150-500** tests/day
- High-throughput (Up to 150T/H)
- High-specificity
- Easy To Operate
- Support Emergency Sample Testing
- Automatic Maintenance
- table top size (500mmX645mmX648mm)

## TESMI i200 Features:

- For labs of **500-1200** tests/day
- Up to 240 to 480T/H
- High-specificity
- Supports immediate addition of reagents and consumables
- Supports emergency, random, and batch testing
- Automatic Maintenance
- Supports 4 connecting modules





# Multiplexed Bead Flow Fluorescence

TESMI F4000

- Up to 1920 tests/hour
- Quantitative
- High Throughput
- All types of reagents

(More at [www.tellgencorp.com](http://www.tellgencorp.com))

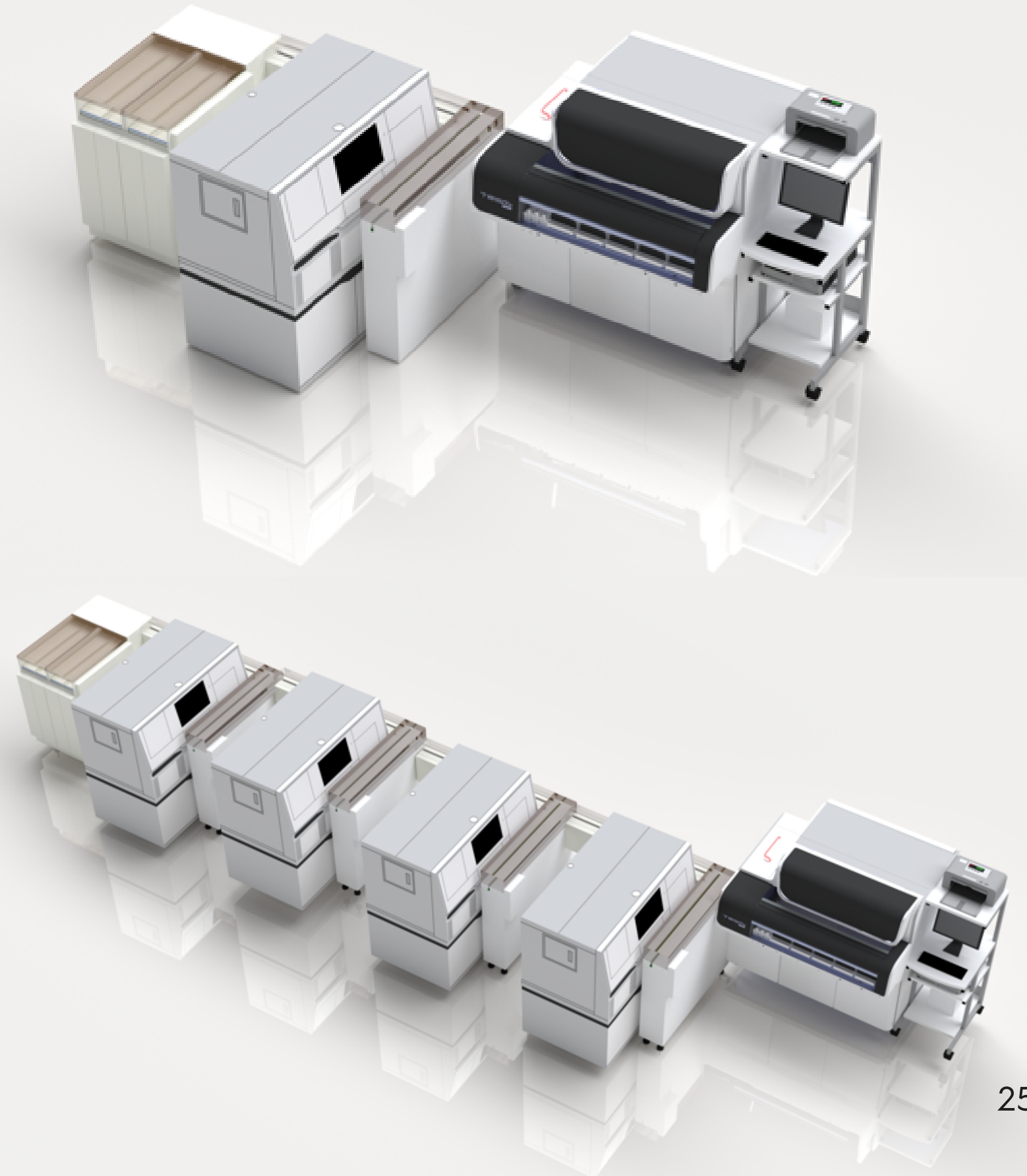


# ImmunDuo 2.0

TESMI F4000 + TESMI i200

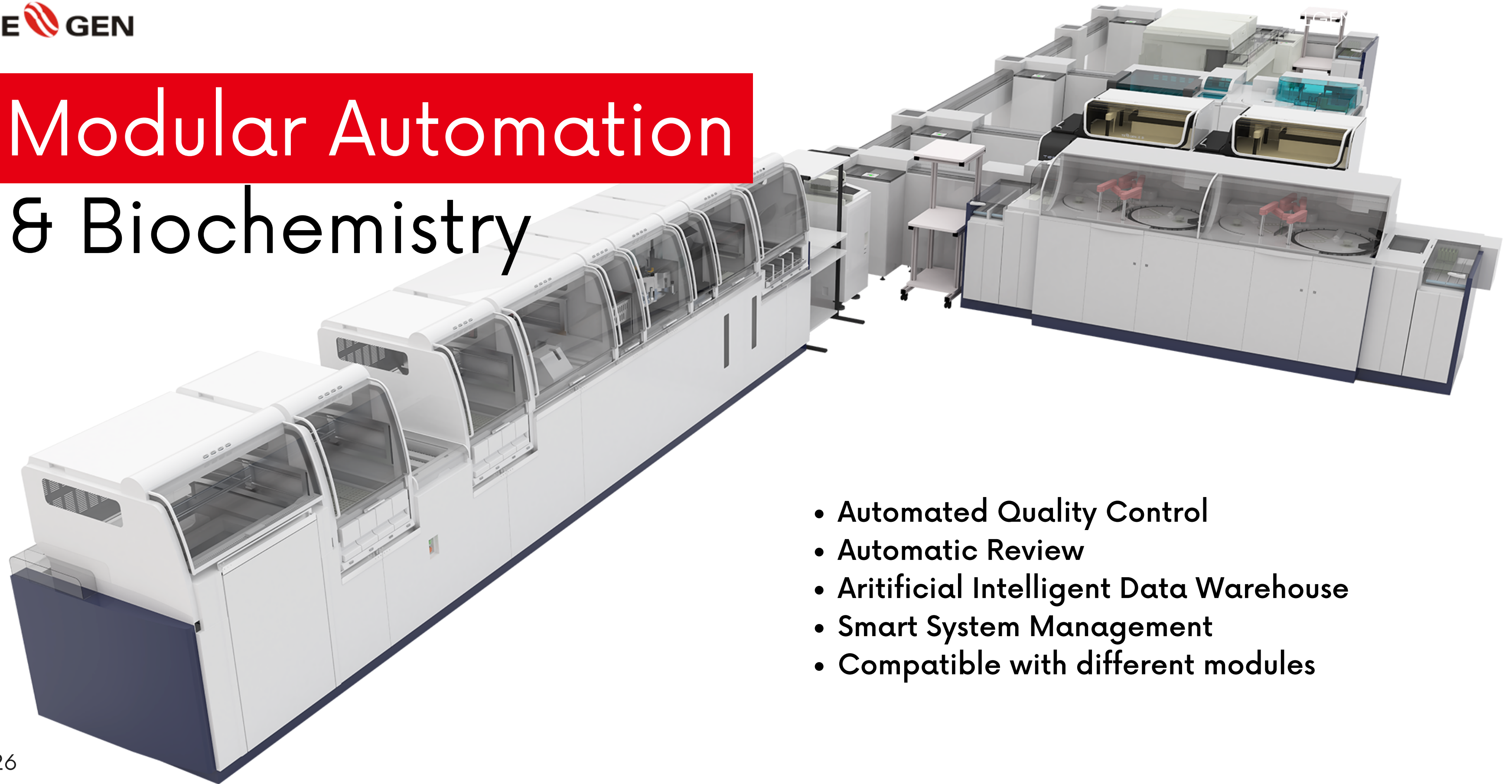
Testing Speed  
2500 tests/hour

Dynamics  
150 analytes  
Multitasking





# Modular Automation & Biochemistry



- Automated Quality Control
- Automatic Review
- Artificial Intelligent Data Warehouse
- Smart System Management
- Compatible with different modules



Part 4:

# Growth



# Updates on our Growth

1

Over 1000 Employees

---

The Tellgen family has grown to over 1000 members around the world.

2

8 Billion Market Cap

---

Tellgen Corporation has reached a market cap of 8 billion and growing.

3

Market Performance

---

Over 1000 hospitals and institutes in China are using Tellgen's products.





12.6% of the Tellgen revenue is invested in research and development in 2020



1 in 5

1/5 at Tellgen is R&D.



# Thank you!

Contact us if there are any questions.



Website ..... [www.tellgencorp.com](http://www.tellgencorp.com)  
[www.tellgen.com](http://www.tellgen.com)

Phone Number ..... +86-21-50800020

Email Address ..... [sales@tellgen.com](mailto:sales@tellgen.com)



# Acknowledgement and Resources



Dennis Yang  
GLOBAL DIRECTOR



Cathy Zhang  
GLOBAL SALES MANAGER



Phillip Lahm  
LOGISTICS MANAGER



Maolin Niu  
LEGAL PERSONNEL



Nicole Yuan  
PRODUCT MANAGER



Aris Tang  
GLOBAL REPRESENTATIVE